



US011198085B2

(12) **United States Patent**
Conrad et al.

(10) **Patent No.:** **US 11,198,085 B2**
(45) **Date of Patent:** **Dec. 14, 2021**

(54) **FILTER APPARATUS FOR A SURFACE
CLEANING APPARATUS**

B01D 2267/40 (2013.01); *B01D 2273/28*
(2013.01); *B01D 2279/55* (2013.01)

(71) Applicant: **Omachron Intellectual Property Inc.**,
Hampton (CA)

(72) Inventors: **Wayne Ernest Conrad**, Hampton
(CA); **Gordon James Howes**, Sozhou
(CN); **Wenxiu Gao**, Suzhou (CN)

(73) Assignee: **Omachron Intellectual Property Inc.**,
Hampton (CA)

(*) Notice: Subject to any disclaimer, the term of this
patent is extended or adjusted under 35
U.S.C. 154(b) by 606 days.

(21) Appl. No.: **15/692,688**

(22) Filed: **Aug. 31, 2017**

(65) **Prior Publication Data**

US 2019/0060812 A1 Feb. 28, 2019

(51) **Int. Cl.**

B01D 53/02 (2006.01)
B01D 46/00 (2006.01)
B01D 45/16 (2006.01)
B01D 46/24 (2006.01)
A47L 9/16 (2006.01)
A47L 9/12 (2006.01)
B01D 50/00 (2006.01)
A47L 5/24 (2006.01)

(52) **U.S. Cl.**

CPC *B01D 46/0023* (2013.01); *A47L 5/24*
(2013.01); *A47L 9/127* (2013.01); *A47L*
9/1666 (2013.01); *B01D 45/16* (2013.01);
B01D 46/0024 (2013.01); *B01D 46/0097*
(2013.01); *B01D 46/24* (2013.01); *B01D*
46/2403 (2013.01); *B01D 50/002* (2013.01);

(58) **Field of Classification Search**

CPC *A47L 5/24*; *A47L 9/127*; *A47L 9/1666*;
B01D 2267/40; *B01D 2273/28*; *B01D*
2279/55; *B01D 45/16*; *B01D 46/0023*;
B01D 46/0024; *B01D 46/0097*; *B01D*
46/24; *B01D 46/2403*; *B01D 50/002*

See application file for complete search history.

(56) **References Cited**

U.S. PATENT DOCUMENTS

5,259,854 A 11/1993 Newman
6,003,196 A * 12/1999 Wright *A47L 5/28*
15/347
6,110,248 A 8/2000 Liu
6,857,164 B2 * 2/2005 Bair *A47L 5/28*
15/347
6,895,632 B2 5/2005 Murray
6,944,909 B2 9/2005 Bair et al.

(Continued)

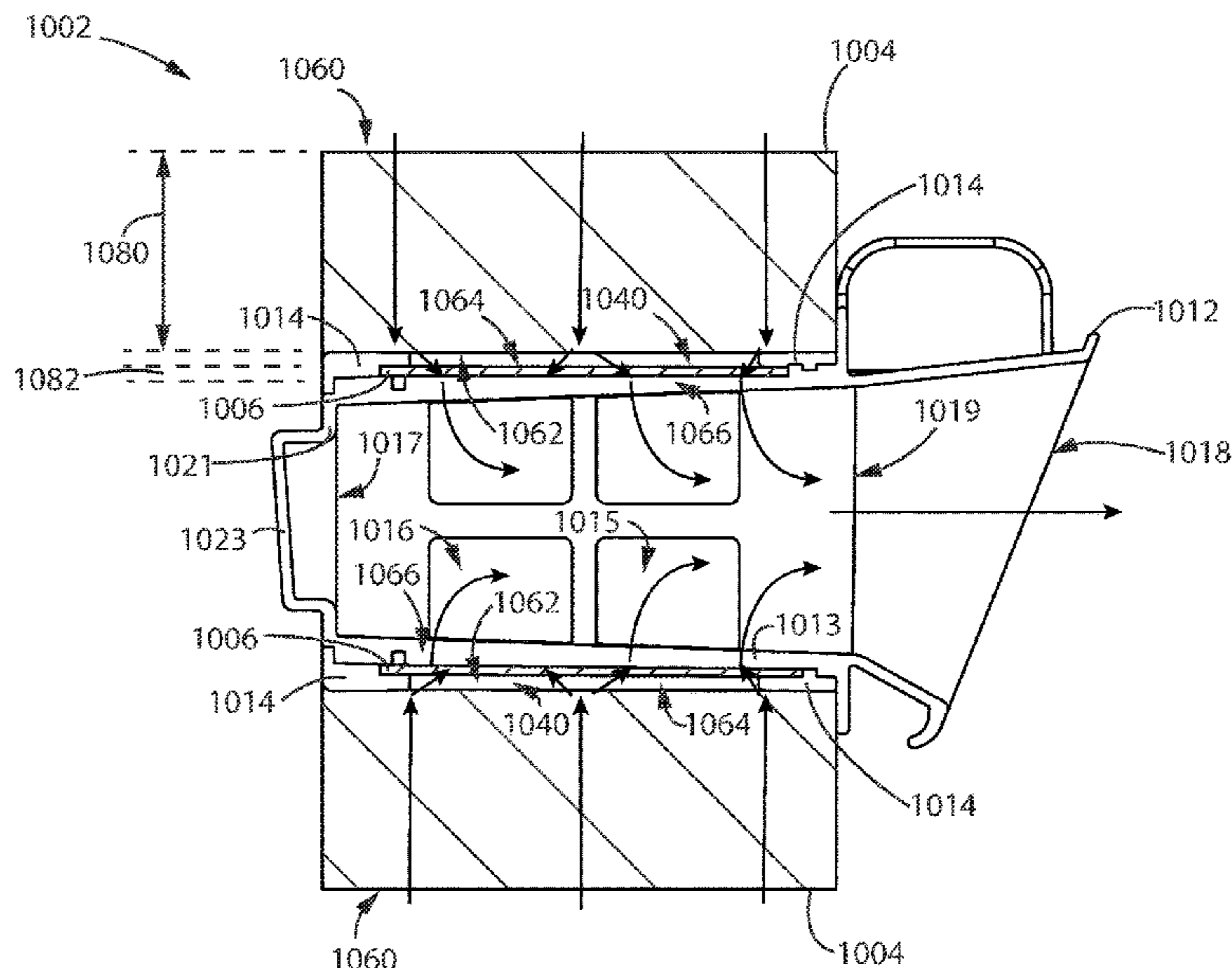
Primary Examiner — Christopher P Jones

(74) *Attorney, Agent, or Firm* — Philip C. Mendes da
Costa; Bereskin & Parr LLP/S.E.N.C.R.L., s.r.l.

(57) **ABSTRACT**

A surface cleaning apparatus having an air flow path from a
dirty air inlet to a clean air outlet and including an air
treatment member, a suction motor and a filter assembly in
the air flow path. The filter assembly includes at least two
spaced apart physical filter elements with the upstream face
of the second filter facing the downstream face of the first
filter element. The filter assembly is configured to prevent
air from bypassing the first physical filter media. The filter
assembly includes a gap between the first filter element and
the second filter element that acts as a header and reduces the
flow rate of air incident on the second filter element.

20 Claims, 16 Drawing Sheets



(56)

References Cited

U.S. PATENT DOCUMENTS

7,114,216 B2 * 10/2006 Stephens A47L 5/28
15/326

7,144,438 B2 12/2006 Lee et al.
RE40,542 E 10/2008 Coburn et al.
7,845,046 B2 12/2010 Milligan et al.
RE43,603 E 8/2012 Coburn et al.
8,308,831 B2 11/2012 Coburn
8,486,170 B2 7/2013 Conrad et al.
8,887,349 B2 * 11/2014 Lee A47L 5/362
15/327.1

2004/0163368 A1 * 8/2004 Lee A47L 9/122
55/429

2005/0138762 A1 6/2005 West
2005/0160554 A1 * 7/2005 Ueyama A47L 9/1608
15/353

2006/0230720 A1 10/2006 Han et al.
2010/0242421 A1 * 9/2010 Conrad A47L 9/122
55/309

2011/0146024 A1 * 6/2011 Conrad A47L 5/24
15/347

2017/0361261 A1 * 12/2017 Panni B01D 46/2414

* cited by examiner

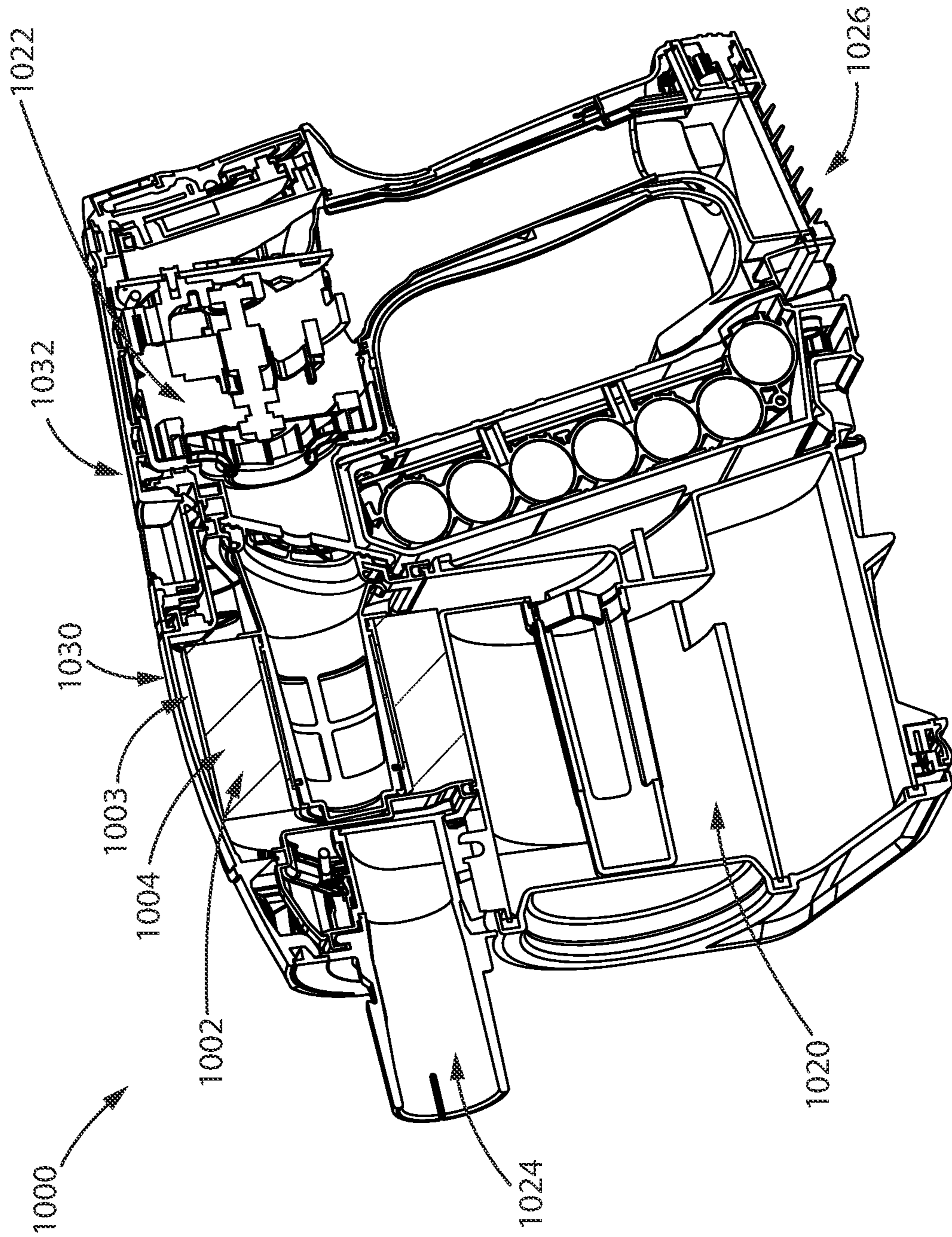


Fig. 1

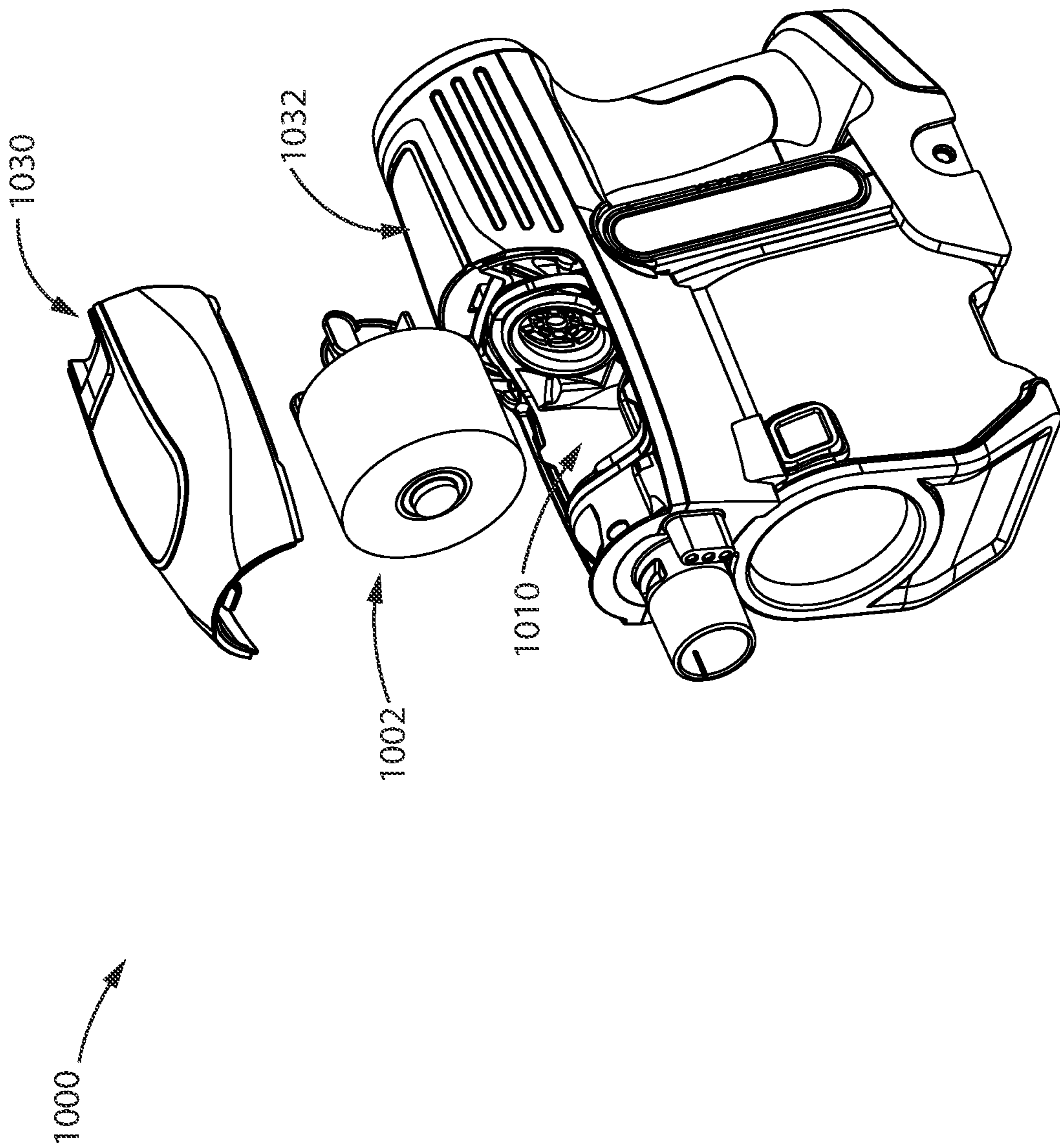


Fig. 2

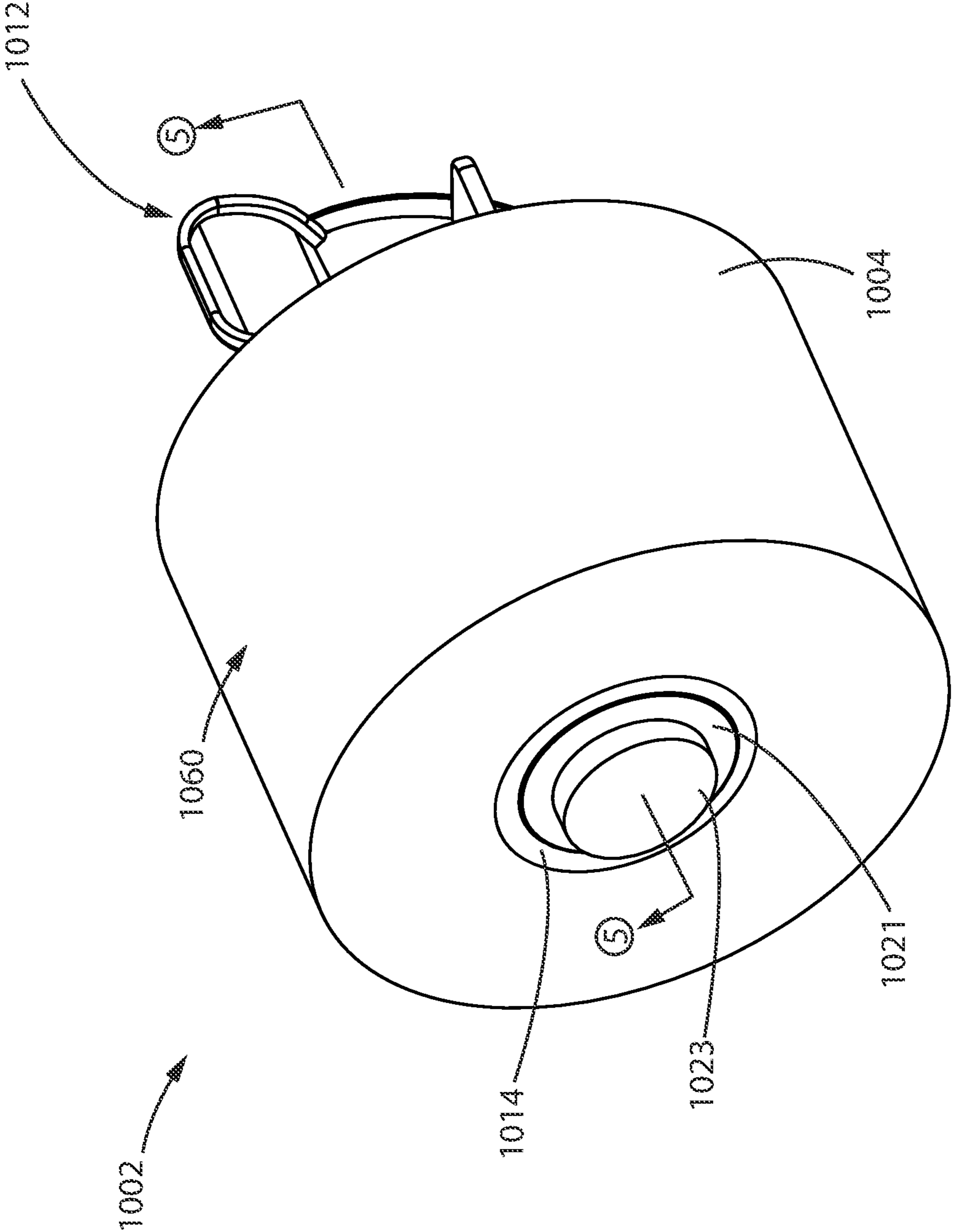


Fig. 3

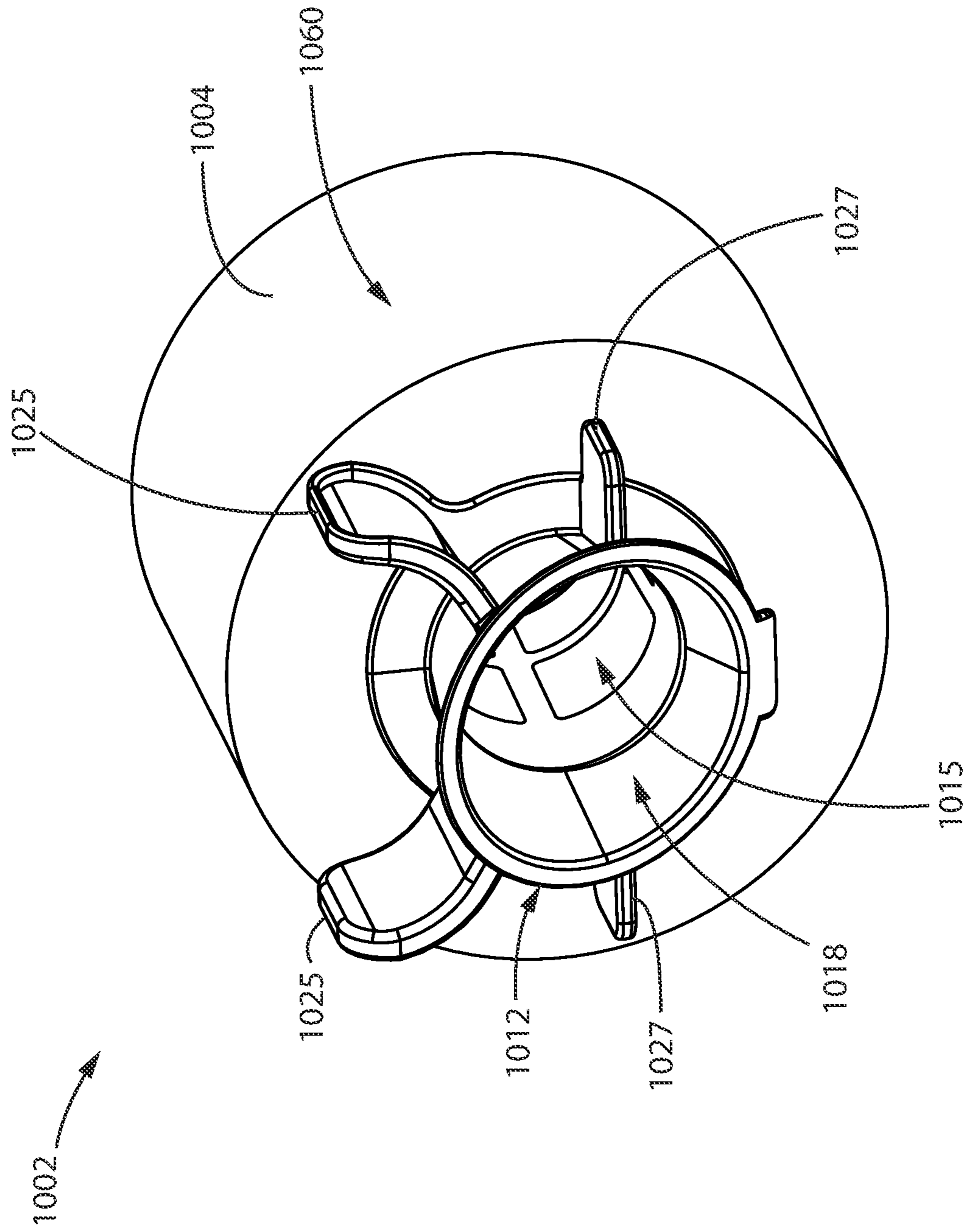


Fig. 4

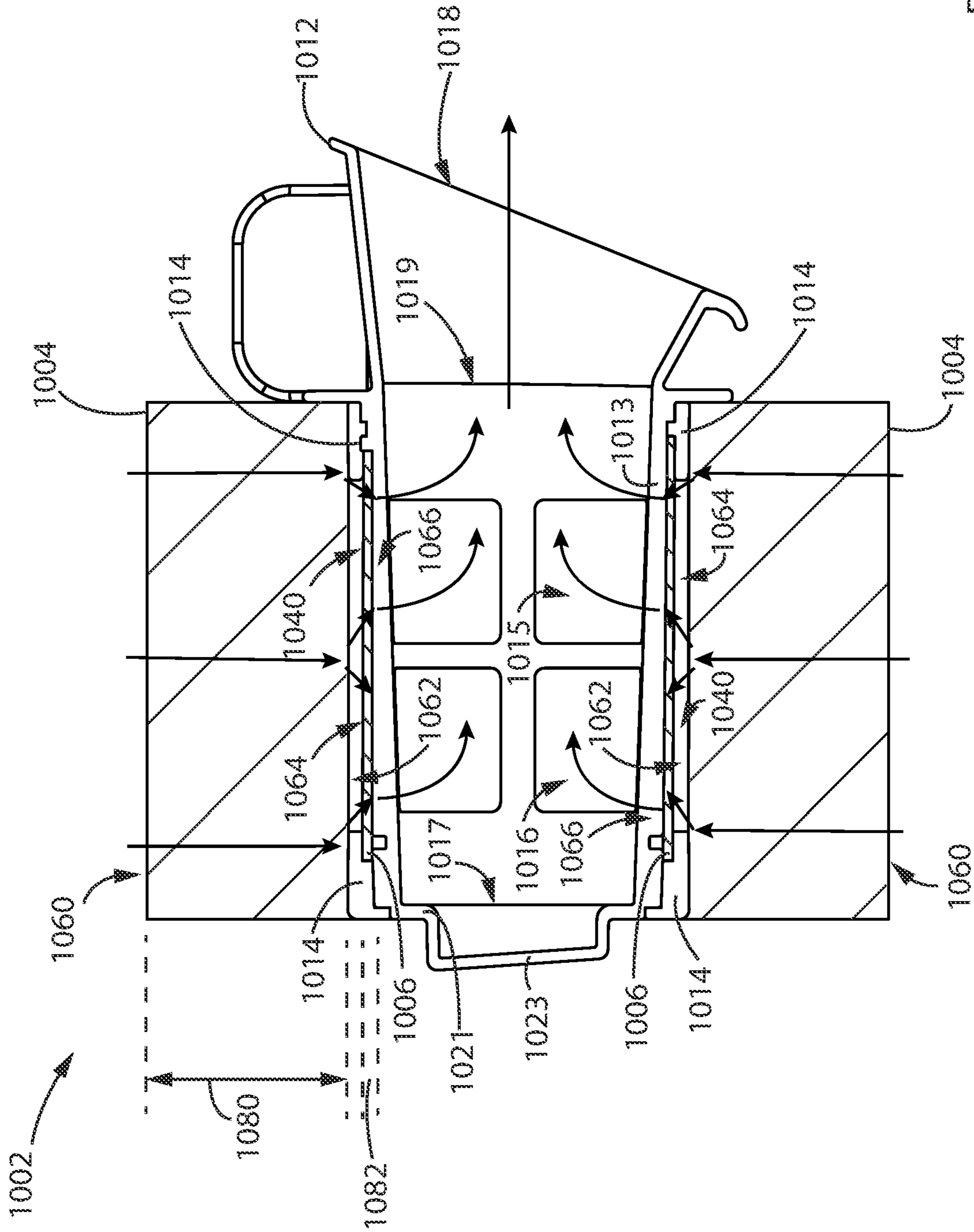


FIG. 5

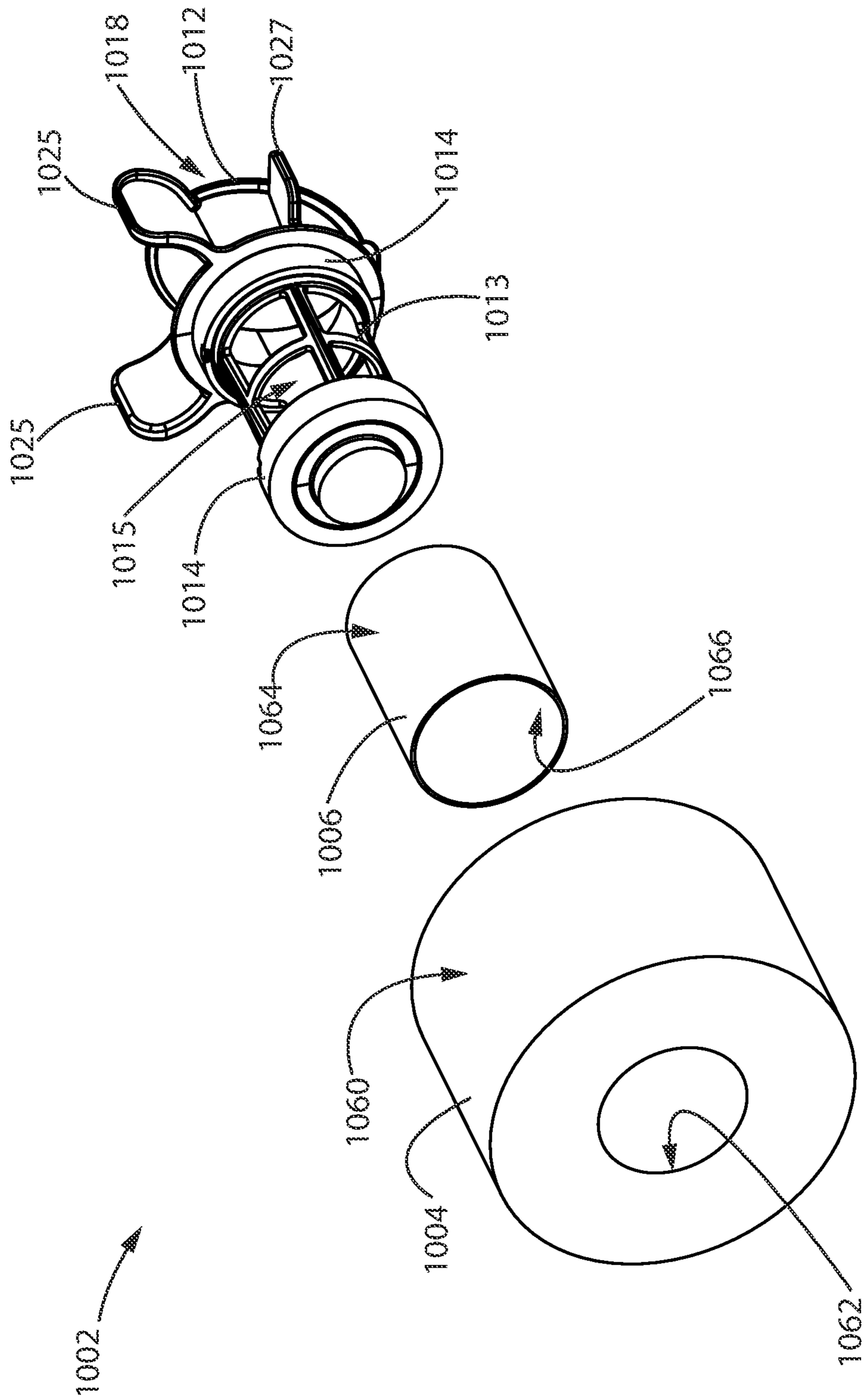


FIG. 6

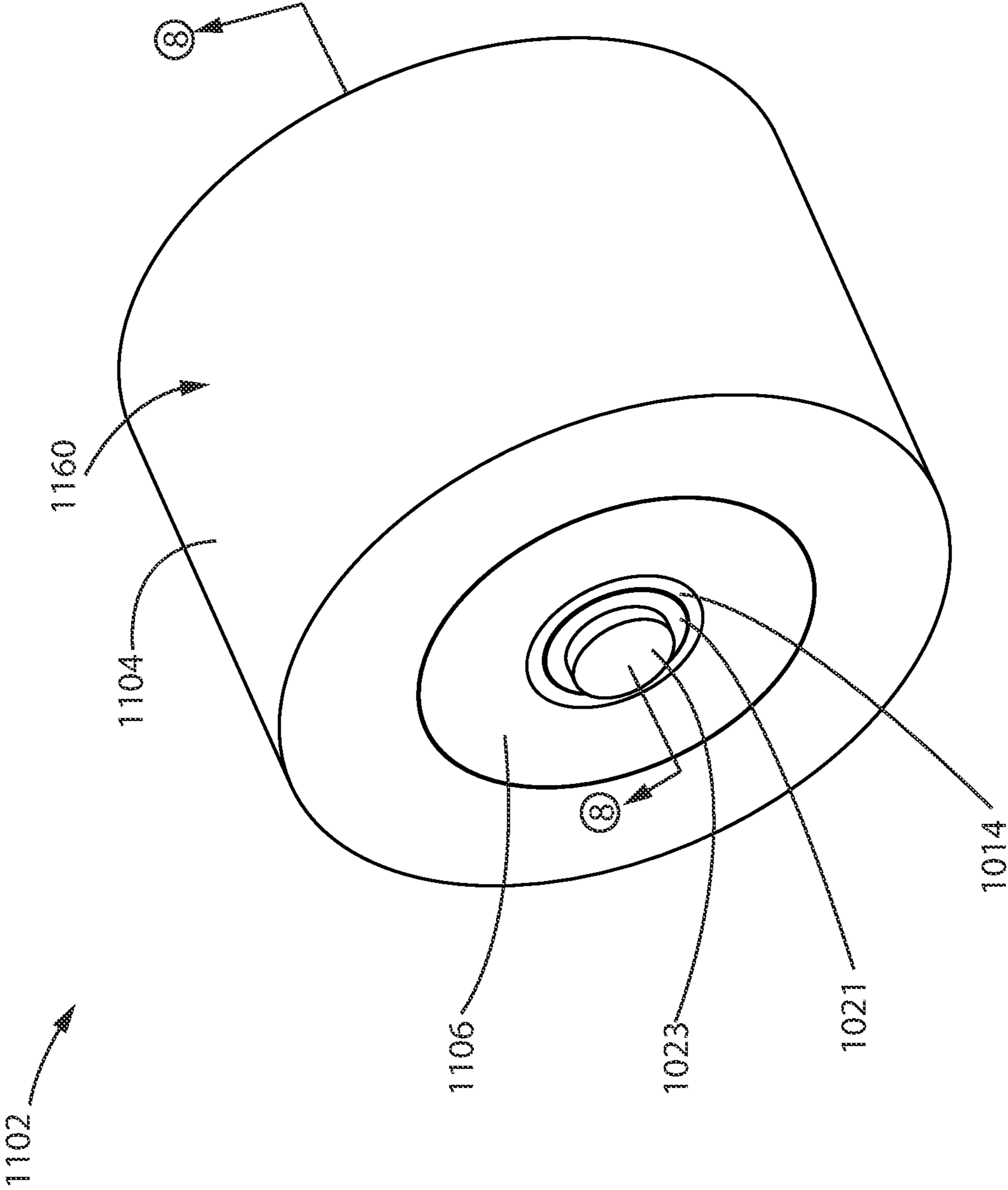


Fig. 7

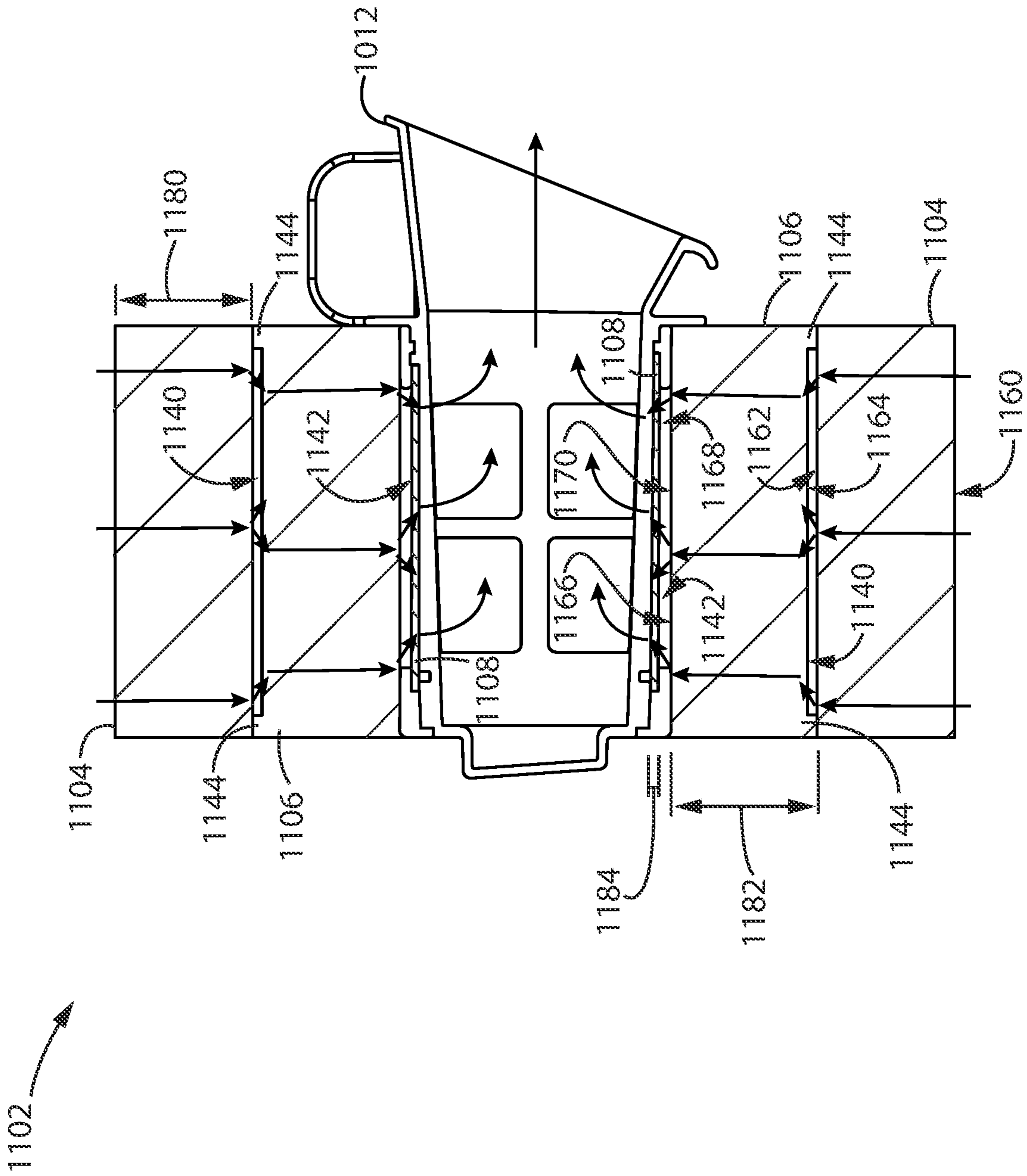


Fig. 8

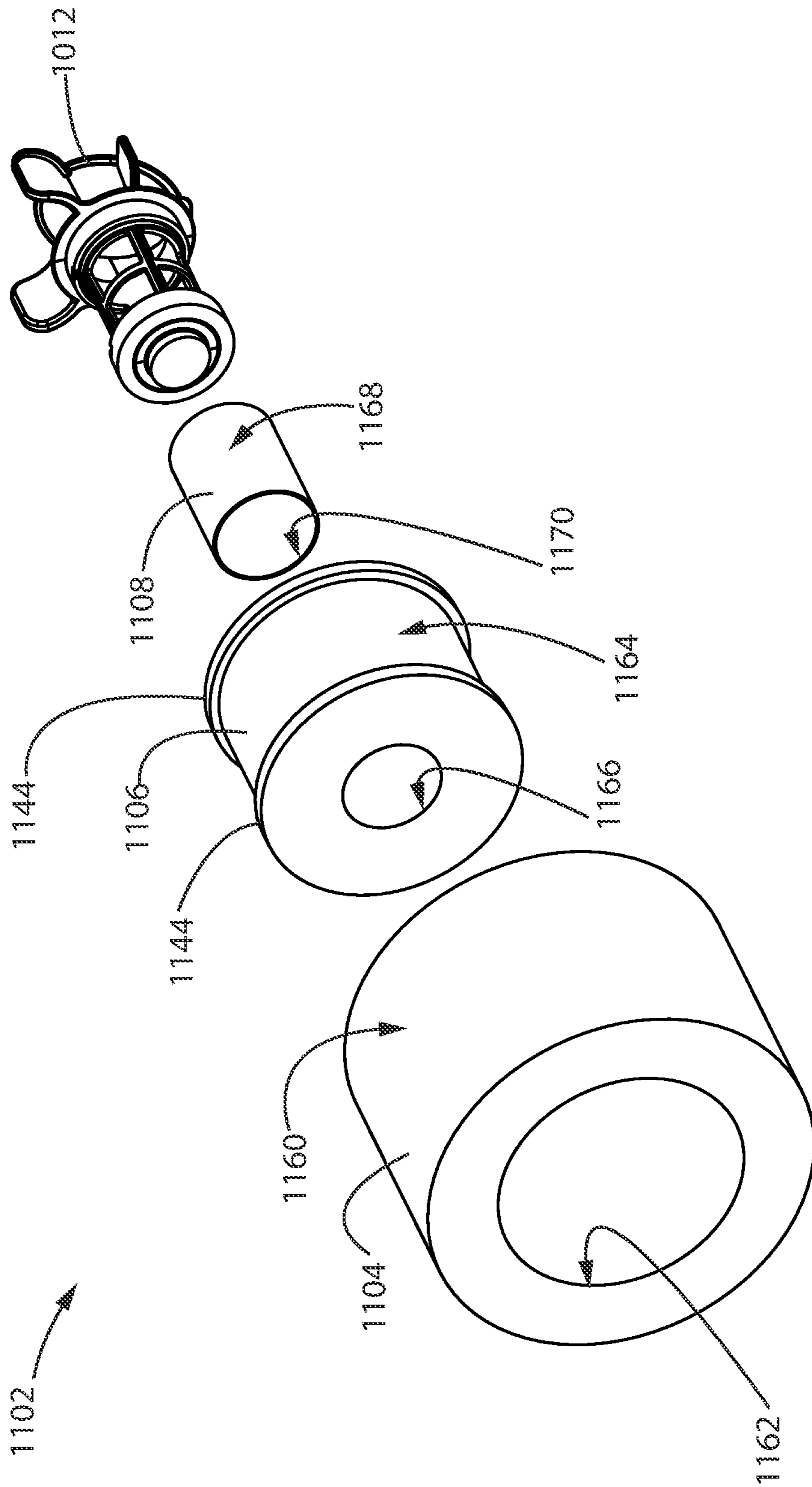


Fig. 9

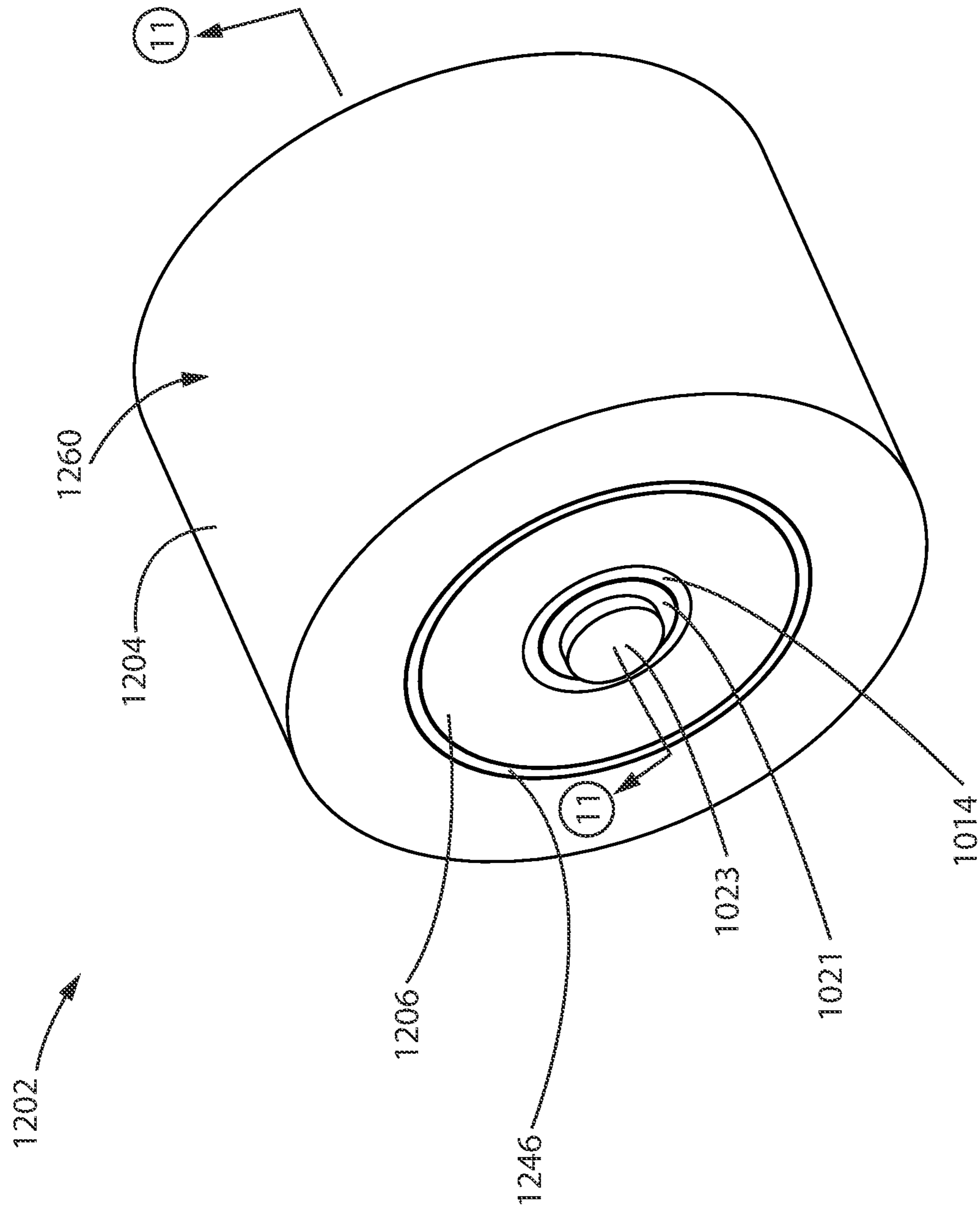


Fig. 10

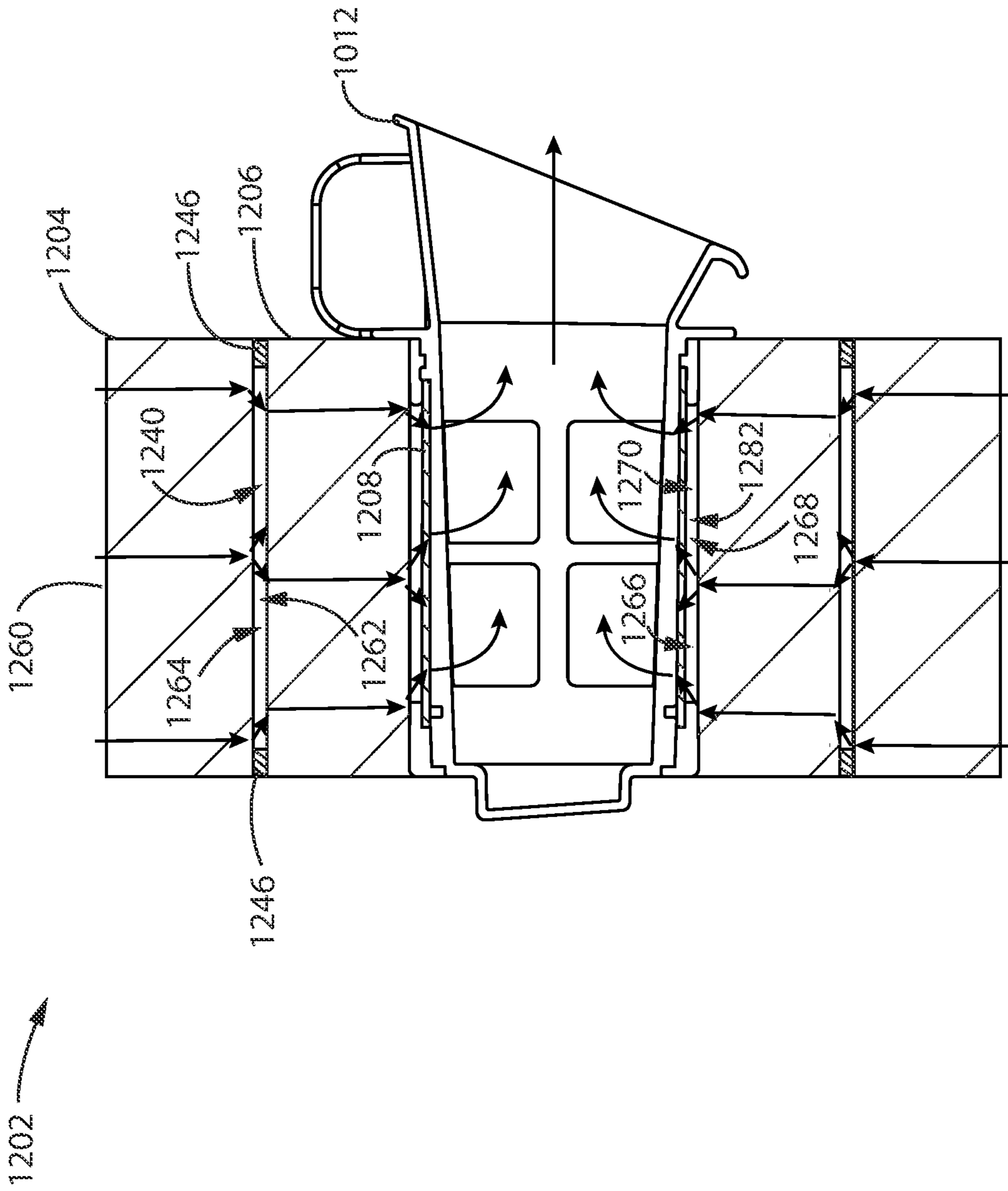


Fig. 11

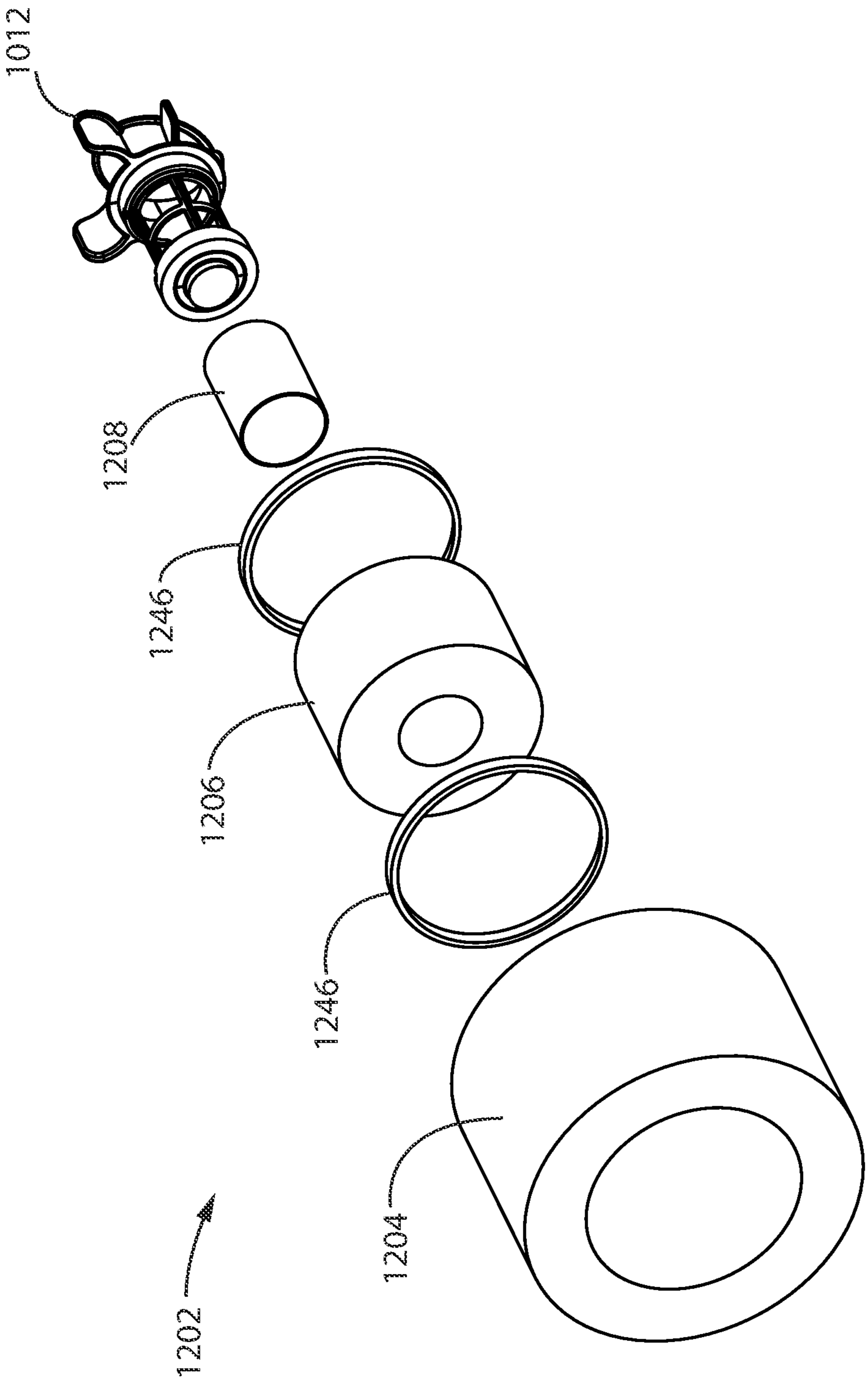


Fig. 12

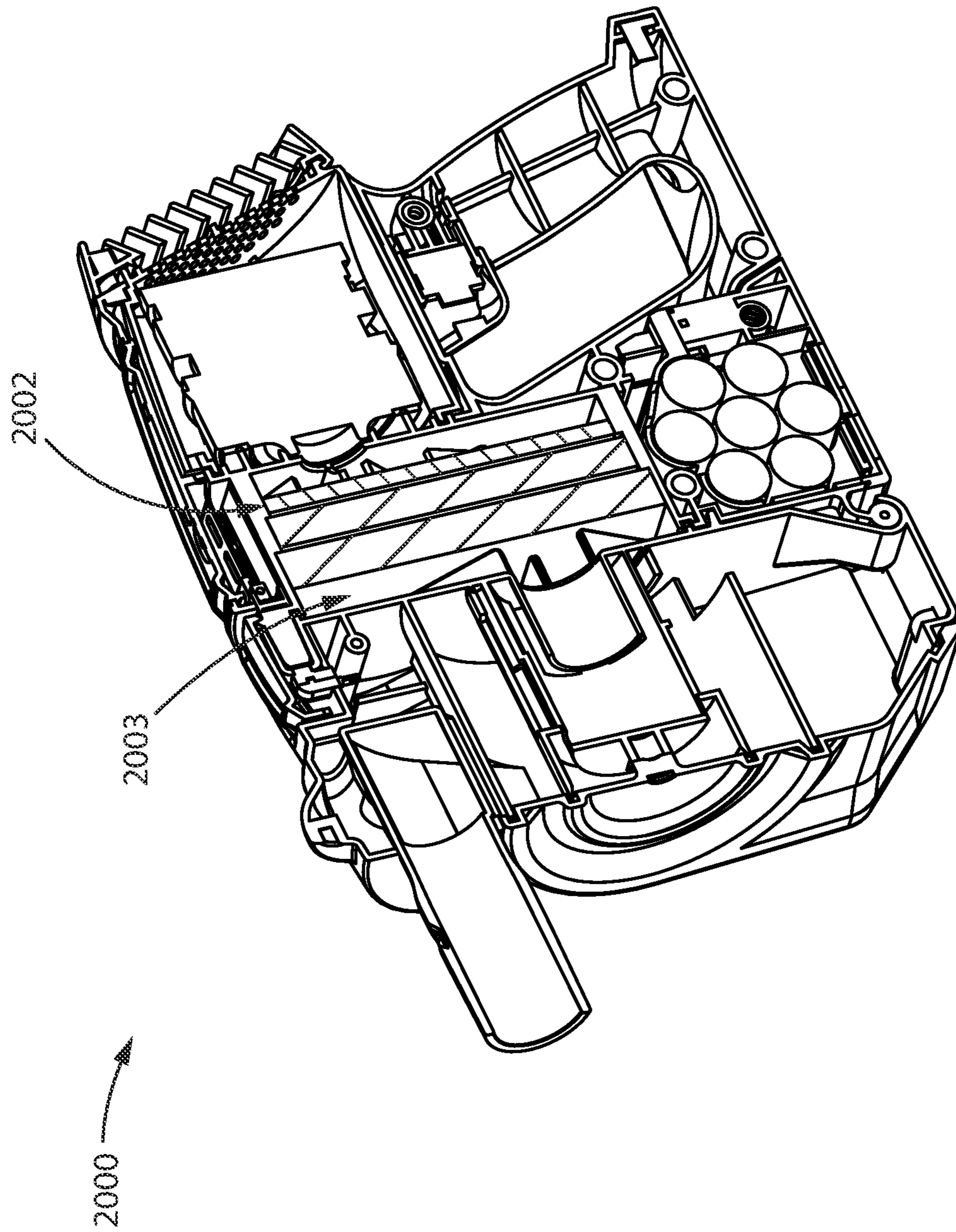


Fig. 13

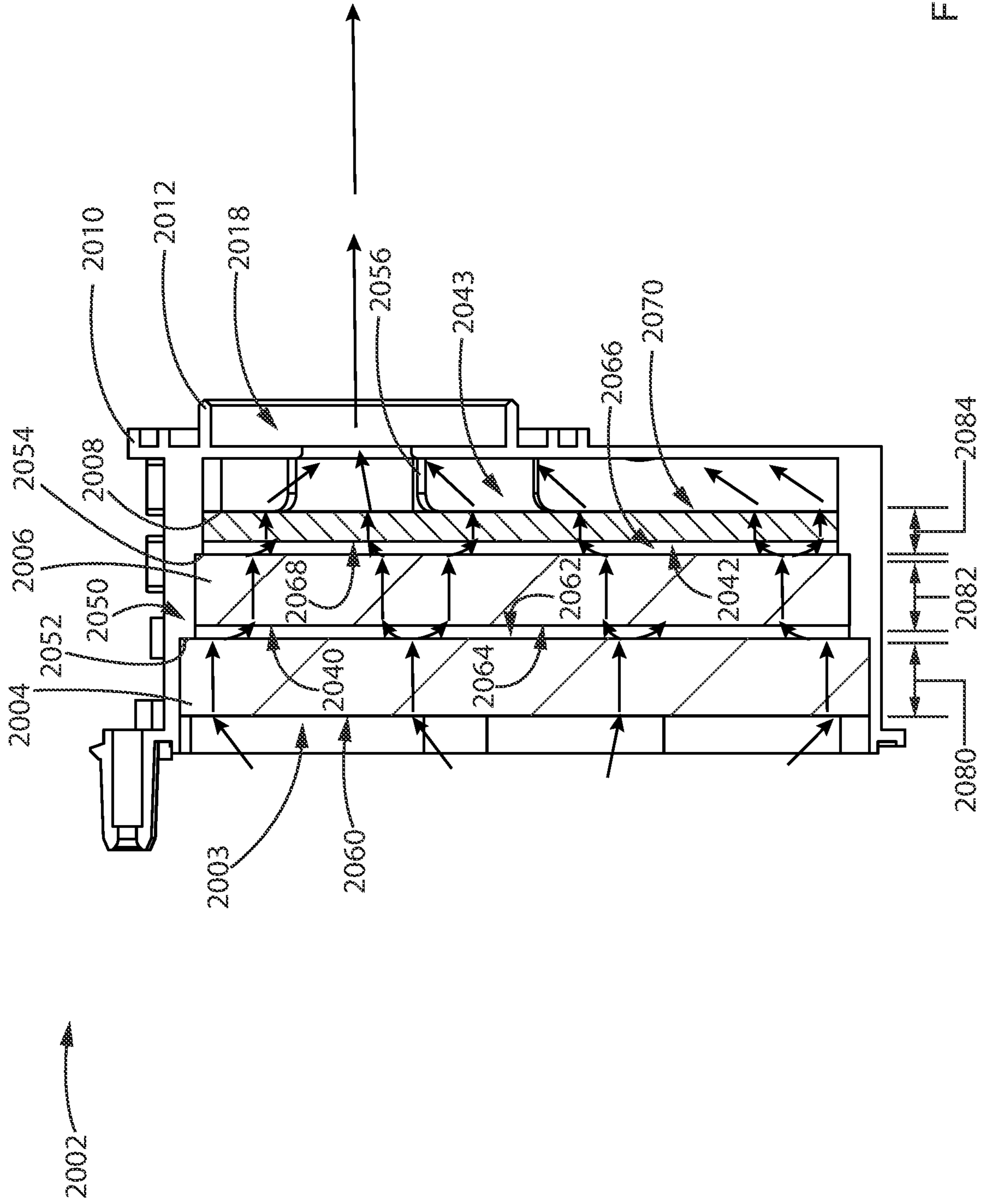


Fig. 14

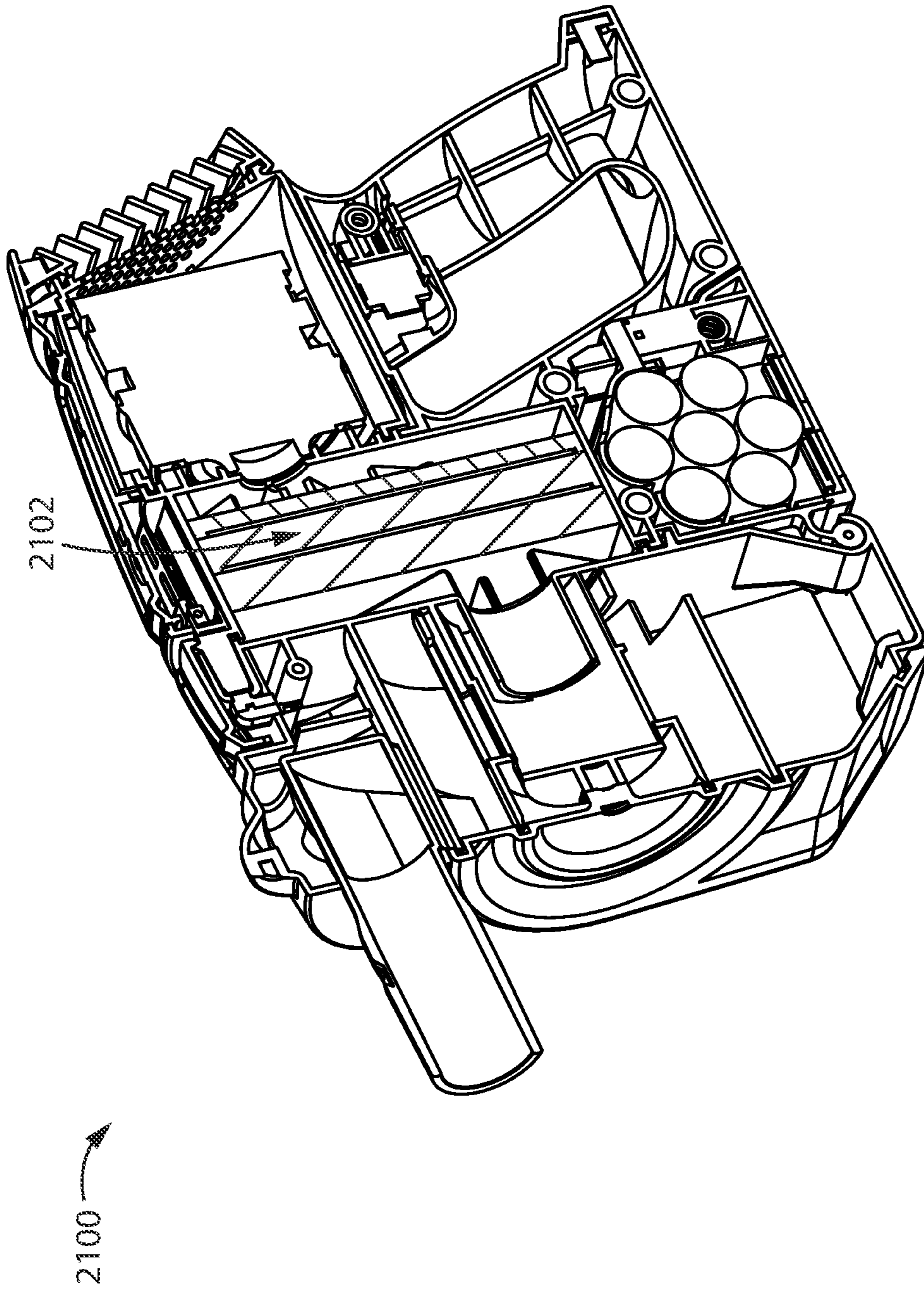


Fig. 15

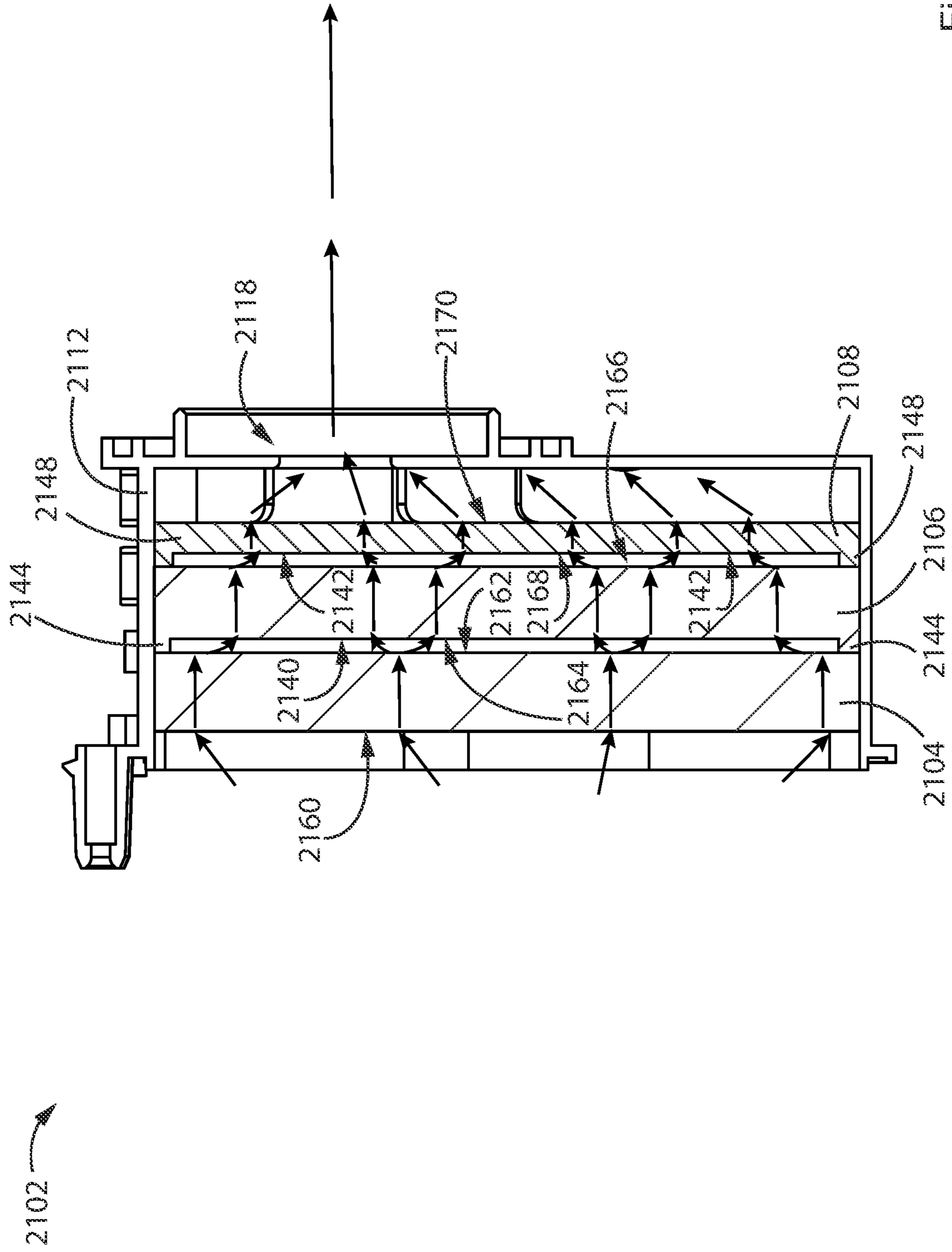


Fig. 16

1

FILTER APPARATUS FOR A SURFACE CLEANING APPARATUS

FIELD

This disclosure relates generally to filter apparatuses for a surface cleaning apparatus. More particularly, this application relates to filter apparatuses having at least two spaced apart layers.

INTRODUCTION

The following is not an admission that anything discussed below is part of the prior art or part of the common general knowledge of a person skilled in the art.

U.S. Pat. No. 8,486,170 (Conrad et al.) discloses a filter apparatus that comprises first and second filters, each having an upstream surface and a downstream surface. The first filter is positioned upstream of the second filter. At least one bypass channel extends from a position upstream of the upstream surface of the first filter to a position upstream of the upstream surface of the second filter. Accordingly, as the first filter becomes clogged and, therefore, a greater back-pressure develops across the first filter, more air may bypass the first filter by means of the bypass channel.

U.S. Pat. No. 9,492,045 (Conrad) discloses a surface cleaning apparatus which uses multiple filters. The upstream filter comprises a hollow cylindrical filter and the downstream filter comprises a planar filter. The filters may be provided at different locations in the surface cleaning apparatus and may be separately removable. Accordingly, multiple steps may be required to remove the filters for cleaning or replacement.

SUMMARY

The following introduction is provided to introduce the reader to the more detailed discussion to follow. The introduction is not intended to limit or define any claimed or as yet unclaimed invention. One or more inventions may reside in any combination or sub-combination of the elements or process steps disclosed in any part of this document including its claims and figures.

According to one broad aspect a filter assembly for a surface cleaning apparatus is provided that has at least two spaced apart filter elements. The filter elements are arranged in a sequence, with a first upstream filter connected in series with a second downstream filter. In some cases, three or more filter elements may be used, with a first filter, a second filter and a third filter in sequence. The filter assembly is configured to define a gap between at least two of the filter elements, and optionally, between each of the filter elements. The filter apparatus is configured to inhibit and, optionally, to prevent air from bypassing one of the filter elements and, optionally, all of the filter elements so that substantially all, and optionally all, of the air in an air stream flows through all of the filter elements. Accordingly, the air is filtered through the first filter and also filtered by the second filter (and any subsequent filters).

An advantage of this design is that, as the filter assembly is used, portions of the upstream filter may start to be clogged with dirt. As a result, the air flow rate through the remaining portions of the filter will increase. This can result in more dirt being pulled through the upstream filter. If the downstream filter is placed in an abutting relationship with the upstream filter, the air will tend to travel generally linearly through the downstream filter and, accordingly,

2

portions of the downstream filter that are aligned with the clogged portions of the upstream filter will tend to have less air flow therethrough. This may result in a higher flow rate of air through portions of the downstream filter and accordingly, more dirt being drawn through the downstream filter. Providing a gap between the downstream face of the first filter element or layer and the upstream face of the second filter element or layer permits the air to spread out across the upstream face of the second filter layer and to pass more evenly through the downstream filter layer. Accordingly, all of the downstream filter may be used more evenly resulting in a reduced flow rate through the downstream filter, and providing for more effective filtering by the second filter. Because air is encouraged to flow through all, or substantially all, of the upstream face of the filter layers used, the filter assembly may filter more air before having to be cleaned or replaced.

A further advantage of this design is that the filter layers may be individually mounted to a filter holder. Concurrently applying to filter layers to a filter holder may result in one or both of the filter layers tearing.

In accordance with this broad aspect, there is provided a surface cleaning apparatus having an air flow path from a dirty air inlet to a clean air outlet and including an air treatment member, a suction motor and a filter assembly provided in the air flow path, the filter assembly comprising:

a) a first physical filter media having an upstream face and a downstream face; and,

b) a second physical filter media having an upstream face and a downstream face, wherein the upstream face of the second physical filter media is spaced from and faces the downstream face of the first physical filter media,

wherein the filter assembly is configured to inhibit air bypassing the first physical filter media.

In some embodiments, the filter assembly may be a pre-motor filter.

In some embodiments, the filter assembly may be removable from the surface cleaning apparatus as a unit.

In some embodiments, the first physical filter media may be mounted in a filter housing and the filter housing may have an absence of a by-pass passage.

In some embodiments, the filter assembly may further comprise an upstream first filter header and the filter housing and the first filter header may direct all air flowing through the air flow path at a location immediately upstream of the first filter header through the first physical filter media.

In some embodiments, the first physical filter media may provide the only air passage from a location immediately upstream of the first physical filter media to a location downstream of the first physical filter media.

In some embodiments, each of the first and second physical filter media may have an average pore size and the average pore size of the second physical filter media may be smaller than the average pore size of the first physical filter media.

In some embodiments, the first physical filter media may comprise foam and the second physical filter media may be selected from the group consisting of felt, electret, Filtrete™ and foam.

In some embodiments, each of the first and second physical filter media may have a diameter and the diameter of the first physical filter media may be between about 75% and 125% of the diameter of the second physical filter media. Optionally, the diameter of the first physical filter media may be generally the same as the diameter of the second physical filter media.

3

In some embodiments, each of the first and second physical filter media may have a cross-sectional area in a direction transverse to air flow therethrough and the cross-sectional area of the first physical filter media may be between about 75% and 125% of the cross-sectional area of the second physical filter media. Optionally, the cross-sectional area of the first physical filter media may be generally the same as the cross-sectional area of the second physical filter media.

In some embodiments, the filter assembly may further comprise a third physical filter media having an upstream face and a downstream face, wherein the upstream face of the third physical filter media may be spaced from and faces the downstream face of the second physical filter media. Optionally, the third physical filter media has an average pore size and the average pore size of the third physical filter media may be smaller than the average pore size of the second physical filter media. Alternately, or in addition, each of the first and second physical filter media may comprise foam and the third physical filter media may be selected from the group consisting of felt, electret, Filtrete™ and foam. Alternately, or in addition, the first physical filter media comprises foam and the second physical filter media is selected from the group consisting of felt, electret, Filtrete™ and foam.

In some embodiments, each of the first, second and third physical filter media has a diameter and the diameter of the first physical filter media may be between about 75% and 125% of the diameter of the second physical filter media, and the diameter of the third physical filter media may be between about 75% and 125% of the diameter of the second physical filter media. Optionally, the diameters of the first, second and third physical filter medias may be generally the same.

In some embodiments, each of the first, second and third physical filter media has a cross-sectional area in a direction transverse to air flow therethrough and the cross-sectional area of the first physical filter media may be between about 75% and 125% of the cross-sectional area of the second physical filter media, and the cross-sectional area of the third physical filter media may be between about 75% and 125% of the cross-sectional area of the second physical filter media. Optionally, the cross-sectional areas of the first, second and third physical filter media may be generally the same.

It will be appreciated by a person skilled in the art that an apparatus or method disclosed herein may embody any one or more of the features contained herein and that the features may be used in any particular combination or sub-combination.

These and other aspects and features of various embodiments will be described in greater detail below.

BRIEF DESCRIPTION OF THE DRAWINGS

For a better understanding of the described embodiments and to show more clearly how they may be carried into effect, reference will now be made, by way of example, to the accompanying drawings in which:

FIG. 1 is a perspective illustration of a cross-section of an exemplary surface cleaning apparatus comprising a first example embodiment of a filter apparatus;

FIG. 2 is a perspective illustration of the surface cleaning apparatus of FIG. 1 with the filter apparatus removed;

FIG. 3 is a front perspective illustration of the first example embodiment of a filter apparatus;

4

FIG. 4 is a rear perspective illustration of the filter apparatus of FIG. 3;

FIG. 5 is a cross-section taken along line 5-5 in FIG. 3;

FIG. 6 is an exploded view of the filter apparatus of FIG. 3;

FIG. 7 is a front perspective view of a second example embodiment of a filter apparatus;

FIG. 8 is a cross-section taken along line 8-8 in FIG. 7;

FIG. 9 is an exploded view of the filter apparatus of FIG. 7;

FIG. 10 is a front perspective view of a third example embodiment of a filter apparatus;

FIG. 11 is a cross-section taken along line 11-11 in FIG. 10;

FIG. 12 is an exploded view of the filter apparatus of FIG. 10;

FIG. 13 is a perspective illustration of a cross-section of an exemplary surface cleaning apparatus comprising a fourth example embodiment of a filter apparatus;

FIG. 14 is a cross-section of the filter apparatus of FIG. 13;

FIG. 15 is a perspective illustration of a cross-section of an exemplary surface cleaning apparatus comprising a fifth example embodiment of a filter apparatus; and,

FIG. 16 is a cross-section of the filter apparatus of FIG. 15.

The drawings included herewith are for illustrating various examples of articles, methods, and apparatuses of the teaching of the present specification and are not intended to limit the scope of what is taught in any way.

DESCRIPTION OF EXAMPLE EMBODIMENTS

Various apparatuses, methods and compositions are described below to provide an example of an embodiment of each claimed invention. No embodiment described below limits any claimed invention and any claimed invention may cover apparatuses and methods that differ from those described below. The claimed inventions are not limited to apparatuses, methods and compositions having all of the features of any one apparatus, method or composition described below or to features common to multiple or all of the apparatuses, methods or compositions described below. It is possible that an apparatus, method or composition described below is not an embodiment of any claimed invention. Any invention disclosed in an apparatus, method or composition described below that is not claimed in this document may be the subject matter of another protective instrument, for example, a continuing patent application, and the applicant(s), inventor(s) and/or owner(s) do not intend to abandon, disclaim, or dedicate to the public any such invention by its disclosure in this document.

The terms “an embodiment,” “embodiment,” “embodiments,” “the embodiment,” “the embodiments,” “one or more embodiments,” “some embodiments,” and “one embodiment” mean “one or more (but not all) embodiments of the present invention(s),” unless expressly specified otherwise.

The terms “including,” “comprising” and variations thereof mean “including but not limited to,” unless expressly specified otherwise. A listing of items does not imply that any or all of the items are mutually exclusive, unless expressly specified otherwise. The terms “a,” “an” and “the” mean “one or more,” unless expressly specified otherwise.

As used herein and in the claims, two or more parts are said to be “coupled,” “connected,” “attached,” or “fastened” where the parts are joined or operate together either directly

5

or indirectly (i.e., through one or more intermediate parts), so long as a link occurs. As used herein and in the claims, two or more parts are said to be “directly coupled”, “directly connected”, “directly attached”, or “directly fastened” where the parts are connected in physical contact with each other. None of the terms “coupled”, “connected”, “attached”, and “fastened” distinguish the manner in which two or more parts are joined together.

Furthermore, it will be appreciated that for simplicity and clarity of illustration, where considered appropriate, reference numerals may be repeated among the figures to indicate corresponding or analogous elements. In addition, numerous specific details are set forth in order to provide a thorough understanding of the example embodiments described herein. However, it will be understood by those of ordinary skill in the art that the example embodiments described herein may be practiced without these specific details. In other instances, well-known methods, procedures, and components have not been described in detail so as not to obscure the example embodiments described herein. Also, the description is not to be considered as limiting the scope of the example embodiments described herein.

Referring to FIGS. 1 and 2, an exemplary surface cleaning apparatus 1000 comprising an embodiment of a filter apparatus 1002 is shown. In the embodiment shown, the surface cleaning apparatus 1000 is a portable hand vacuum cleaner, and more particularly, is a cyclonic portable hand vacuum cleaner. In alternate embodiments, the filter apparatus 1002 may be provided in another type of surface cleaning apparatus, such as an upright vacuum cleaner, a canister-type vacuum cleaner, an extractor or a filter-bag type vacuum cleaner. Such vacuum cleaners may of any design.

The surface cleaning apparatus 1000 comprises a main body with an outer wall 1032. An airflow passage extends within the outer wall 1032, from a dirty air inlet 1024 to a clean air outlet 1026. A cyclone unit 1020 is optionally positioned in the airflow passage, downstream of the dirty air inlet 1024. The cyclone unit 1020 may comprise a cyclone, which removes dirt from air in the airflow passage. In alternate embodiments, other air treatment members may be positioned in the airflow passage to remove dirt from the air in the air flow passage. A suction motor 1022 is also provided in the airflow passage. The suction motor 1022 draws air through the airflow passage. In the exemplified embodiment, the suction motor 1022 is provided in the airflow passage, downstream of the cyclone unit 1020. It will be appreciated that the operational components of a surface cleaning apparatus may be of any type and they may be in any arrangement.

As shown in FIG. 1, in the exemplified embodiment, a pre-motor filter apparatus 1002 is provided in the airflow passage, between the cyclone unit 1020 and the suction motor 1022. In alternate embodiments, the filter apparatus 1002 may be positioned elsewhere in the airflow passage, such as downstream of motor 1022, or in cyclone unit 1020.

The filter apparatus 1002 is a filter assembly with two or more spaced apart layers of physical filter media. As used herein, “filter”, “filter layer” and “filter element” are used to refer to a layer of physical filter media unless the context indicates otherwise.

Referring now to FIGS. 2-6, the filter apparatus 1002 may comprise a first or upstream filter 1004, and a second or downstream filter 1006. The first filter 1004 has an upstream surface 1060 and a downstream surface 1062. Similarly, the second filter 1006 has an upstream surface 1064 and a downstream surface 1066. As exemplified in FIG. 5, the upstream surface 1064 of the second filter 1006 is positioned

6

spaced from and facing the downstream surface 1062 of the first filter 1004. Thus, air flowing through the first filter 1004 and out downstream surface 1062 may then flow through the upstream surface 1064 of the second filter 1006 as shown by arrows in FIG. 5.

The first filter 1004 and the second filter 1006 may be any suitable type of physical filter media, such as a foam filter, a felt filter, an electret filter, a Filtrete™ filter, or any other type of filter. Preferably, the second filter 1006 has pores that are smaller than the pores of the first filter 1004. For example, the first filter 1004 may comprise a foam filter medium and the second filter 1006 may use a physical filter medium selected from the group consisting of felt, electret, Filtrete™ and foam. The first filter 1004 may allow smaller particles of dirt to pass therethrough to reduce the air pressure on the upstream face 1060.

As the second filter 1006 may capture smaller particles of dirt than first filter 1004 alone, the air that is emitted at the clean air outlet 1026 may be more thoroughly filtered. Providing an increasingly granular filtering of the air in the air flow passage may allow the air to be more thoroughly filtered without rapidly clogging the upstream face of the first filter. This may also reduce pressure at the upstream face of each filter 1004 and 1006.

Alternatively, the upstream filter 1004 and the downstream filter 1006 each have the same size pores. Accordingly, the first filter 1004 and second filter 1006 may each use the same type of physical filter medium.

As exemplified in FIG. 5, the upstream surface 1064 of the second filter 1006 is spaced apart from the downstream surface 1062 of the first filter 1004. Accordingly, the filter assembly 1002 may be configured to define a gap 1040 between the upstream face 1064 of the second filter 1006 and the downstream face 1062 of the first filter 1004. The gap 1040 may reduce the flow rate of air after it has passed through the first filter 1004 and before it is incident on the upstream face 1064 of the second filter 1006. This may reduce pressure on the upstream face 1064 of the second filter 1006 and increase the effectiveness of the second filter 1006.

As the first filter 1004 is used, the upstream surface 1060 may collect dirt. Regions of the upstream face 1060 may accumulate more dirt than other locations. Air passing through a filter will tend to travel generally linearly. Accordingly, portions of the filter media behind (downstream) the portions which have higher concentrations of dirt will tend to be less used. Conversely, more air will tend to enter the filter media at the cleaner regions of the upstream surface of the first filter 1004 and to flow generally linearly through the filter media behind the cleaner regions. Further, the air flow rate through the cleaner regions will increase compared to the air flow rate through the filter media when the filter media is new. Providing a gap 1040 allows air that has passed through the first filter 1004 to spread out across the upstream face 1064 of the second filter 1006. Thus, gap 1040 may operate as a header and encourage air exiting the first filter 1004 to engage a larger surface area of the upstream face 1064 of the second filter 1006 rather than just those portions of the upstream face 1064 that are aligned with the cleaner regions of the first filter 1004.

In the example shown in FIGS. 2-6, the first filter 1004 and second filter 1006 are annular or substantially annular. This may enable a larger surface area of the upstream surface of each filter. In alternate embodiments, other suitable shapes of filter may be used such as the planar filters shown in FIGS. 13-16.

In this embodiment, filter apparatus **1002** comprises a filter housing **1010**. As exemplified, the filter housing **1010** comprises a portion of the outer wall **1032** of the surface cleaning apparatus **1000** and may be integrally formed therewith. In the embodiment shown, filter housing **1010** also comprises a portion of the sidewall of cyclone unit **1020** and may be integrally formed therewith. Additionally or alternatively, the filter housing **1010** may comprise a portion of the suction motor housing and may be integrally formed therewith (see FIGS. 13-16).

The filter assembly **1002** may be configured to prevent or inhibit air from bypassing the first filter **1004**. Preferably, the filter assembly **1002** may also inhibit air from bypassing the second filter **1006**. Thus, all or substantially all the air in the air flow passage may be forced to flow through both the first filter **1002** and the second filter **1004**. This may provide for a more thorough filtering of the air in the airflow passage.

The filter housing **1010** may be configured to inhibit air from bypassing the first filter **1004**. That is, the filter housing **1010** may not provide any by-pass passages that allow air to circumvent either filter **1004** or **1006**. Thus, all, or substantially all, the air in the air flow passage may be forced to flow through both the first filter **1004** and the second filter **1006**.

In some embodiments, the filter assembly **1002** may also include a first filter header **1003** upstream from the upstream surface **1060** of the first filter **1004**. The first filter header **1003** may allow air to spread around, and pass through, the entire upstream face **1060** of the first filter **1004**. As a result, the first filter **1004** may provide a larger effective surface area for filtering. This may prolong the useful life of filter assembly **1002** before it needs to be cleaned or replaced, as air is permitted flow through cleaner regions of the first filter **1004** when dirt accumulates on other locations of the upstream face **1060**.

The filter assembly **1002** may be configured to direct all air flowing through the air flow path at a location immediately upstream of the first filter header **1003** through the first filter **1004**. The filter housing **1010** may be arranged along with the first filter header **1003** such that the only path for air immediately upstream of the first filter header **1003** is through the first filter **1004**. That is, the first filter **1004** may provide the only air passage from a location immediately upstream of the first filter **1004** to a location downstream of the first filter **1004**.

Preferably, the filter apparatus **1002** includes a filter support member **1012**. As shown in FIG. 6, generally annular filters **1004** and **1006** are supported by filter support member **1012**. Filter support member **1012** has an outlet conduit **1018** for directing an air flow after it has passed through the filters **1004** and **1006**. As shown in FIG. 5, in use, air flows from an outer or upstream surface **1060** of the first filter **1004**, through the first filter media, to an inner or downstream side **1062** of the first filter **1004**. The air then flows through gap **1040** to the upstream surface **1064** of the second filter **1006**, through the second filter media, and to the outlet conduit **1018** via apertures **1016** in the support member **1012**.

As illustrated in FIG. 6, filter support member **1012** has a main body portion **1013** that extends into a hollow interior of the generally cylindrical filter **1006**. In the illustrated embodiment, an outer surface of main body portion **1013** is flush with a downstream or inner surface **1066** of filter **1006**, and the downstream surface **1064** is in air flow communication with an internal filter conduit **1015**. More specifically, in the illustrated example a plurality of apertures **1016** define a porous portion of the filter support member **1012** between a first end **1017** and a second end **1019** of the main body

portion **1013**. It will be appreciated that more or fewer apertures may be provided in alternative embodiments.

The outlet conduit **1018** extends from the second end **1019** of the main body portion **1013**. The first or opposed end **1017** of the main body portion **1013** is sealed to inhibit and preferably prevent air from exiting the internal filter conduit **1015** from the second end, so that substantially and preferably all of the air that exits the downstream side **1064** of the downstream filter **1006** is directed through outlet conduit **1018**. In the illustrated example, an end wall **1021** is provided to cap the opposed end **1017** of the main body portion **1013**. Optionally, end wall **1021** has an outwardly projecting portion **1023** to facilitate positioning the filter assembly **1002** in a surface cleaning apparatus.

As shown in FIG. 2, the filter apparatus **1002** may be removable from the surface cleaning apparatus **1000** as a unit. Optionally, the filter housing **1010** may be openable, and at least a portion of the outer wall **1032** (e.g. removable or otherwise openable door **1030**) may be removable, openable, or otherwise re-configurable to provide access to the interior of the filter housing **1010**.

Additionally or alternatively, a portion of the filter housing **1010** may be removable from the surface cleaning apparatus along with the filter assembly **1002**. This may facilitate removing the filter assembly **1002** without having to contact with filters **1004** and **1006**, which may become dirty during use.

Optionally, one or more alignment projections may be provided on the outer surface of outlet conduit **1018**. In the illustrated example, a pair of alignment flanges **1025** extend from an axially longer side of outlet conduit **1018**. Flanges **1025** may facilitate in the seating and/or alignment of filter assembly **1002** within the surface cleaning apparatus **1000**. For example, in the illustrated example the flanges **1025** may be configured to act as camming surfaces with one or more projections from an internal surface of the openable door **1030** of the filter housing **1010**.

Additionally, or alternatively, flanges **1025** may allow a user to grip and/or manipulate filter assembly **1002** without having to come into contact with filters **1004** and **1006**, which may become dirty during use.

Optionally, one or more support projections may be provided on one or both ends of the filter assembly **1002**. In the illustrated example, a pair of support flanges **1027** extend from opposite lateral sides of outlet conduit **1018**. Flanges **1027** may facilitate the support and/or alignment of filter assembly **1002** within a filter housing **1010**.

In the illustrated embodiment, filter support member **1012** (including outlet conduit **1018**, main body portion **1013**, and end wall **1021**) is a one piece assembly (e.g. integrally formed). In alternative embodiments, filter support member **1012** may be constructed from two or more parts.

The filter support member **1012** may be configured to define the gap **1040** between the filters **1004** and **1006**. As shown in FIG. 6, the filter support member **1012** may also include shoulders **1014**. In the example embodiment shown in FIGS. 2-6, the gap **1040** between the first filter **1004** and the second filter **1006** is defined by the shoulders **1014** of the filter support member **1012**.

Additionally or alternatively, the first filter **1004** or second filter **1006** may have one or more projections or recessed portions that define the gap **1040**.

Additionally or alternatively, separate spacing members may also be provided between the first filter **1004** and second filter **1006** to define the gap **1040** therebetween.

As exemplified in FIG. 5, the upstream filter **1004** seats on the shoulders **1014** while the downstream filter **1006** seats

on the porous portion. Accordingly, the height of the shoulders, less the thickness of the filter **1006**, may define the thickness of height of the gap **1040**. During use, the downstream face of filter **1004** may tend to deflect towards the upstream face of filter **1006**. It will be appreciated that, as discussed previously, one or more additional spacing members extending between filters **1004**, **1006**, such as spacer members **1246** exemplified in FIG. **12**) may be provided along the length of gap **1040**.

In the example shown in FIGS. **2-6**, the thickness **1080** of the first filter **1004** is substantially larger than the thickness **1082** of the second filter **1006**. Alternatively, the thickness **1080** of the first filter **1004** may be generally the same as the thickness **1082** of the second filter **1006**.

Optionally, the surface area in a direction orthogonal to the direction of air flow entering of the first filter **1004** may be between about 75% and 125% of the surface area in a direction orthogonal to the direction of air flow entering the second filter **1006**. In the filter apparatus **1002**, the surface area of the upstream surface **1060** of the first filter **1004** is larger than the surface area of the upstream surface **1064** of the second filter **1006**.

In the examples of FIGS. **13-16**, the filters are planar and are disc shaped. In such a case, the diameter of the first physical filter media **1004** may be between about 75% and 125% of the diameter of the second physical filter media **1006**. If the filters are not disc shaped, then the cross-sectional area of the first physical filter media **1004** in a direction transverse to air flow therethrough may be between about 75% and 125% of the cross-sectional area of the second physical filter media **1006** in a direction transverse to air flow therethrough.

Alternatively, the cross-sectional area of the first filter **1004** in a direction transverse to air flow therethrough may be generally the same as the cross-sectional of the second filter **1006** in a direction transverse to air flow therethrough.

Referring now to FIGS. **7-9**, a second example embodiment of a filter apparatus **1102** is shown. The structure of filter apparatus **1102** is generally the same as filter apparatus **1002**, except that filter apparatus **1102** has three layers of physical filter media rather than the two layers of filter apparatus **1002**.

The filter apparatus **1102** includes a first upstream filter **1104**, a second intermediate filter **1106** and a third downstream filter **1108**. In general, the third downstream filter **1108** corresponds to the downstream filter **1006**.

The upstream filter **1104** also generally corresponds to upstream filter **1004**, although the hollow inner portion of upstream filter **1104** may be larger to accommodate the intermediate filter **1106**. As shown, the thickness of upstream filter **1104** may be the same as upstream filter **1004**, but the overall diameter may be larger in order to accommodate the second filter **1106**. Alternatively, the thickness of the upstream filter **1104** may be reduced to accommodate the second filter **1106** while providing a filter assembly **1102** requiring less space in the surface cleaning apparatus **1000**.

As with filter apparatus **1002**, in filter apparatus **1102** the upstream face **1164** of the second filter **1106** is spaced apart from and facing the downstream face **1162** of the first filter **1104**. However, the gap **1140** between the first filter **1104** and the second filter **1106** is defined by legs **1144** provided on the second filter **1106**. The legs **1144** extend from the second filter **1106** to the first filter **1104** at each end of the second filter **1106** with a space between the legs **1144** defining the gap **1140**. In filter apparatus **1102**, the gap **1140** may be considered a recess in the upstream surface **1164** of

the second filter **1106**. The legs **1144** may be made of the filter media, alone or reinforced with a rigid substrate. Additional legs may be provided intermediate the two longitudinally spaced apart legs **1144** that are illustrated. Alternately, or in addition, a separate rigid member, such as spacer members **1246** exemplified in FIG. **12** may be used.

In filter apparatus **1102**, the downstream face **1166** of the second filter **1106** faces the upstream face **1168** of the third filter **1108**. The upstream face of the third filter **1108** is spaced apart from the downstream face **1166** of the second filter **1106** with a gap **1142** defined therebetween.

The gap **1142** functions in a manner similar to the gaps **1140**, **1040** and may reduce the air flow rate of air exiting the downstream face **1166** of the second filter **1106**. The gap **1142** may also permit the air to spread across substantially all of the upstream face **1168** of the third filter **1108**.

As exemplified, the third filter **1108** is mounted on a filter support member **1012** in a manner analogous to the second filter **1006**. Air from the downstream face **1166** of the second filter **1106** flows through the third filter **1108**, out the downstream face **1170** of the third filter **1108** and into the internal filter conduit **1015**.

The first filter **1104**, second filter **1106**, and third filter **1108** may be any suitable type of physical filter media, such as a foam filter, a felt filter, an electret filter, a Filtrete™ filter, or any other type of filter. Preferably, each of the first and second physical filter media comprises foam and the third physical filter media is selected from the group consisting of felt, electret, Filtrete™ and foam.

Preferably, the third filter **1108** has pores that are smaller than the pores of the second filter **1106**. Preferably, the second filter **1106** has pores that are smaller than the pores of the first filter **1104**. This may provide a gradual, three-stage filtering of the air that flows through the filter assembly **1102** which may ensure that the upstream faces of filters **1104**, **1106** and **1108** may accumulate dirt at similar rates. This may also provide a more consistent air flow rate through each of the filters **1104**, **1106** and **1108**.

Alternatively, the pores of the first filter **1104** and second filter **1106** may be the same, while the third filter **1108** has pores that are smaller than the pores of the second filter **1106**.

Alternatively, the pores of the first filter **1104**, second filter **1106** and third filter **1108** may each be the same size.

Any suitable thickness of filter may be used for the first filter **1104**, second filter **1106** and the third filter **1108**. Preferably, the thickness **1180** of the first filter **1104** may be between about 75% and 125% the thickness **1182** of the second physical **1106**. More preferably, as shown in FIG. **8**, the thickness **1180** of the first filter **1104** may be generally the same as the thickness **1182** of the second physical **1106**. In the example shown in FIG. **8**, the thickness **1184** of the third filter **1108** is substantially less than the thickness **1180** of the first filter **1104** or the thickness **1182** of the second filter **1106**.

Referring now to FIGS. **10-12**, shown therein is a third embodiment of a filter apparatus **1202**. Similar to filter apparatus **1102** described above, the filter apparatus **1202** also includes three filter layers **1204**, **1206** and **1208**. The filter layers **1204**, **1206** and **1208** generally correspond to filter layers **1104**, **1106** and **1108** except that filter layer **1206** does not include extending leg portions **1144**.

In filter apparatus **1202**, a pair of spacer members **1246** are positioned between the first filter layer **1204** and the second filter layer **1206**. The spacer members **1246** define

the gap **1240** between the downstream face **1262** of first filter **1204** and the upstream face **1264** of the second filter **1206**.

The spacer members **1246** may be secured to both the first filter layer **1204** and second filter layer **1206** to seal the gap **1240** and prevent air from flowing out the ends of the filter apparatus **1202**. For instance, the spacer members **1246** may be adhered to both the first filter layer **1204** and second filter layer **1206**. Alternatively, the spacer members **1246** may be frictionally or otherwise secured to the first filter layer **1204** and second filter layer **1206**. For example, the spacer members **1246** may be elastic and may be secured to the second filter layer **1206** in a state of tension to provide a seal between the spacer members **1246** and the second filter layer **1206**. Alternately the spacer members may be held in place by a compressive force applied when first filter layer **1204** is positioned over the second filter layer **1206**.

In some examples, the first filter layer **1204**, second filter layer **1206** and spacer elements **1246** may be provided as a unitary upstream filter component for filter apparatus **1202**. This may facilitate interchanging the upstream and intermediate filter elements as a user would not be required to align and secure the spacer elements **1246** when replacing the filters in filter apparatus **1202**.

FIGS. **13** and **14** exemplify an alternative example of a surface cleaning apparatus **2000** with a fourth embodiment of a filter apparatus **2002**. The filter apparatus **2002** is generally similar in operation to filter apparatuses **1102** and **1202**, except that the filters **2004**, **2006** and **2008** are planar rather than cylindrical or annular and may be disc shaped in a direction transverse to air flow therethrough.

As shown in FIGS. **13** and **14**, the first planar filter **2004**, second planar filter **2006** and third planar filter **2008** are arranged in sequence such that air flows from the upstream surface **2060**, through filters **2004**, **2006**, **2008** and out the downstream surface **2070** and through outlet conduit **2018**.

In the filter apparatus **2002**, a filter support member **2012** provides a portion of the filter housing **2010**. The filter support member **2012** also includes stepped sidewalls **2050** onto which the first filter **2004** and second filter **2006** are mounted. The steps/shoulders of the sidewalls **2050** are configured to define the gaps **2040** and **2042**.

The first upstream step **2052** provides a seat for the first filter **2004** while the second step **2054** provides a seat for the second filter **2006**. The first step **2052** is spaced apart from the second step **2054** by a distance greater than the diameter **2082** of the second filter **2006**. Accordingly, the gap **2040** is defined between the downstream face **2062** of the first filter **2004** and the upstream face **2064** of the second filter **2006**.

In the example shown, the third filter **2008** is mounted on a series of support projections **2056**. The support projections **2056** define an outlet gap **2043** between the downstream face **2070** of the third filter **2008** and the outlet conduit **2018**. The diameter **2084** of the third filter **2008**, sidewalls **2050** and support projections **2056** are configured to define the gap **2042** between the downstream face **2066** of the second filter **2006** and the upstream face **2068** of the third filter **2008**.

Preferably, the thickness **2080** of the first filter **2004** may be between about 75% and 125% of the thickness **2082** of the second filter **2006**, and the thickness **2084** of the third filter **2008** may be between about 75% and 125% of the thickness **2082** of the second filter **2006**. In the example shown in FIGS. **13-14**, the thickness **2080** and **2082** of the first filter **2004** and second filter **2006** are generally the same, while the thickness **2084** of the third filter **2008** is

smaller. Alternatively, the thickness of the first, second and third physical filter medias may be generally the same.

A header **2003** is also provided in the airflow passage upstream from the upstream surface **2060** of the first filter **2004**. The header **2003** and filter housing **2010** direct all air flowing through the air flow path at a location immediately upstream of the first filter header through the first physical filter media.

It will be appreciated that the filter assembly of FIGS. **13** and **14** may use two filter media layers or more than 3 filter media layers. It will be appreciated that, as discussed previously, additional spacing elements (which may be formed as part of a filter or which may be separate spacer members) may be provided across the surface area of the filters.

FIGS. **15** and **16** exemplify a fifth example embodiment of a filter apparatus **2102** in another example surface cleaning apparatus **2100**. The filter apparatus **2102** generally corresponds to filter apparatus **2002** except that the filter support member **2112** is not stepped.

In filter apparatus **2102**, the second filter **2106** has a pair of extending legs **2144** at either end of the second filter **2106** similar to the legs **1144** of the second filter **1106** in filter apparatus **1102**. In filter apparatus **2102**, the third filter **2108** also has a pair of extending legs **2148** at either end. The legs **2144** define the gap **2140** between the downstream face **2162** of the first filter **2104** and the upstream face **2164** of the second filter **2106**. The legs **2148** define the gap **2142** between the downstream face **2166** of the second filter **2106** and the upstream face **2168** of the third filter **2108**.

Alternatively, separate spacer elements that extend between opposed spaced apart faces of adjacent filters (similar to spacer members **1246**) may be provided between the first filter **2104** and second filter **2106** and/or between second filter **2106** and the third filter **2108** to define the gaps **2140** and **2142** respectively. Alternatively, the sidewalls **2150** may include projections that define gaps between the filters **2104**, **2106** and **2108**.

It will be appreciated that the filter assembly of FIGS. **15** and **16** may use two filter media layers or more than 3 filter media layers.

As used herein, the wording “and/or” is intended to represent an inclusive-or. That is, “X and/or Y” is intended to mean X or Y or both, for example. As a further example, “X, Y, and/or Z” is intended to mean X or Y or Z or any combination thereof.

While the above description describes features of example embodiments, it will be appreciated that some features and/or functions of the described embodiments are susceptible to modification without departing from the spirit and principles of operation of the described embodiments. For example, the various characteristics which are described by means of the represented embodiments or examples may be selectively combined with each other. Accordingly, what has been described above is intended to be illustrative of the claimed concept and non-limiting. It will be understood by persons skilled in the art that other variants and modifications may be made without departing from the scope of the invention as defined in the claims appended hereto. The scope of the claims should not be limited by the preferred embodiments and examples, but should be given the broadest interpretation consistent with the description as a whole.

The invention claimed is:

1. A surface cleaning apparatus having an air flow path from a dirty air inlet to a clean air outlet and including an air treatment member, a suction motor and a filter assembly provided in the air flow path, the filter assembly comprising:

13

- a) a first longitudinally extending annular physical filter media having an upstream face and a downstream face;
- b) a second longitudinally extending annular physical filter media having an upstream face and a downstream face, wherein the upstream face of the second annular physical filter media is positioned interior the first annular physical filter media whereby the upstream face of the second annular physical filter media faces the downstream face of the first annular physical filter media, wherein the first and second longitudinally extending annular physical filter media are discrete elements that are separable from each other; and,
- c) a longitudinally extending gap located between the upstream face of the second annular physical filter media and the downstream face of the first annular physical filter media, the gap having first and second longitudinally spaced apart ends wherein the first and second longitudinally spaced apart ends are closed whereby prior to passing through the second longitudinally extending annular physical filter media, air travels through the first longitudinally extending annular physical filter media,

wherein the first longitudinally extending annular physical filter media is maintained in position with respect to the second longitudinally extending annular physical filter media by a compressive force applied by the first longitudinally extending annular physical filter media when the first longitudinally extending annular physical filter media is positioned overlying the second longitudinally extending annular physical filter media.

2. The surface cleaning apparatus of claim 1 wherein the filter assembly is a pre-motor filter.

3. The surface cleaning apparatus of claim 1 wherein the filter assembly is removable from the surface cleaning apparatus as a unit.

4. The surface cleaning apparatus of claim 1 wherein the first annular physical filter media is mounted in a filter housing and the filter housing has an absence of a by-pass passage.

5. The surface cleaning apparatus of claim 4 further comprising an upstream first filter header and the filter housing and the first filter header direct all air flowing through the air flow path at a location immediately upstream of the first filter header through the first annular physical filter media.

6. The surface cleaning apparatus of claim 1 wherein the first annular physical filter media provides the only air passage from a location immediately upstream of the first annular physical filter media to a location downstream of the first annular physical filter media.

7. The surface cleaning apparatus of claim 1 wherein each of the first and second annular physical filter media have an average pore size and the average pore size of the second annular physical filter media is smaller than the average pore size of the first annular physical filter media.

8. The surface cleaning apparatus of claim 7 wherein the first annular physical filter media comprises foam and the second annular physical filter media is selected from the group consisting of felt, electret and foam.

9. The surface cleaning apparatus of claim 1 wherein each of the first and second annular physical filter media has a diameter and the diameter of the first annular physical filter media is up to 25% larger than the diameter of the second annular physical filter media.

10. The surface cleaning apparatus of claim 1 wherein each of the first and second annular physical filter media has a cross-sectional area in a direction transverse to air flow

14

therethrough and the cross-sectional area of the first annular physical filter media is up to 25% larger than the cross-sectional area of the second annular physical filter media.

11. The surface cleaning apparatus of claim 1 further comprising a third annular physical filter media having an upstream face and a downstream face, wherein the upstream face of the third annular physical filter media is positioned interior the second annular physical filter media whereby the upstream face of the third annular physical filter media faces the downstream face of the second annular physical filter media.

12. The surface cleaning apparatus of claim 11 wherein the third annular physical filter media has an average pore size and the average pore size of the third annular physical filter media is smaller than the average pore size of the second annular physical filter media.

13. The surface cleaning apparatus of claim 12 wherein each of the first and second annular physical filter media comprises foam and the third annular physical filter media is selected from the group consisting of felt, electret and foam.

14. The surface cleaning apparatus of claim 12 wherein the first annular physical filter media comprises foam and the second annular physical filter media is selected from the group consisting of felt, electret and foam.

15. The surface cleaning apparatus of claim 11 wherein each of the first, second and third annular physical filter media has a diameter and the diameter of the first annular physical filter media is up to 25% larger than the diameter of the second annular physical filter media, and the diameter of the third annular physical filter media is up to 25% larger than of the diameter of the second annular physical filter media.

16. The surface cleaning apparatus of claim 11 wherein each of the first, second and third annular physical filter media has a cross-sectional area in a direction transverse to air flow therethrough and the cross-sectional area of the first annular physical filter media is up to 25% larger than the cross-sectional area of the second annular physical filter media, and the cross-sectional area of the third annular physical filter media is up to 25% larger than the cross-sectional area of the second annular physical filter media.

17. A surface cleaning apparatus having an air flow path from a dirty air inlet to a clean air outlet and including an air treatment member, a suction motor and a filter assembly provided in the air flow path, the filter assembly comprising:

- a) a first discrete physical filter media having an upstream face and a downstream face; and,
- b) a second discrete physical filter media having an upstream face and a downstream face,

wherein the first discrete physical filter media extends around the second discrete physical filter media and wherein the filter assembly inhibits air bypassing the first discrete physical filter media as the air travels to the second discrete physical filter media, and

wherein a compressive force produced by the first and second discrete filter media maintains the first discrete physical filter media in position with respect to the second discrete physical filter media.

18. The surface cleaning apparatus of claim 17 wherein the upstream face of the second discrete physical filter media is spaced from and faces the downstream face of the first discrete physical filter media.

19. The surface cleaning apparatus of claim 17 wherein each of the first and second discrete physical filter media has a diameter and the diameter of the first discrete physical filter media is up to 25% larger than the diameter of the second discrete physical filter media.

20. The surface cleaning apparatus of claim 17 wherein each of the first and second discrete physical filter media have an average pore size and the average pore size of the second discrete physical filter media is smaller than the average pore size of the first discrete physical filter media. 5

* * * * *